

Diamond Wire Saws for Cutting Stone/Concrete/Metal/Others



1. Granite Quarry Cutting



2. Granite Squaring/Slab Cutting



3. Granite Profiling



4. Marble Quarry Cutting



5. Marble Squaring/Slab Cutting



6. Marble Profiling



7. Granite Multi-Wires Cutting



8. Marble Multi-Wires Cutting



9. Special Stone Cutting



10. Concrete Cutting



11. Metal Cutting



12. Silicon Sapphire Jade Cutting

1. Diamond Wire Saw for Granite Quarry Cutting



This rubber coating diamond wire-saws are widely used for granite quarries. It is improving the quarrying efficiency, working safely and protect environment well, and its high performance brings good sized blocks without inner breaks and can exploit large dimension blocks with low quarry cost.

| Code No. | Diameter | Fixing Type | Beads No. pcs/M | Granite Hardness | Linear Speed (m/s) | Cutting Speed (mm/min) | Life (m ² /m) | |
|--------------|----------|---------------|-----------------|------------------|--------------------|------------------------|--------------------------|-----------|
| DWSGQ11.5-01 | Φ11.5mm | Rubber | 40pcs | Class 1-2 | 26-30 | 5-7 | 12-20 | |
| DWSGQ11.5-02 | | Rubber+Spring | | | | | | Class 3-4 |
| DWSGQ11.0-03 | Φ11.0mm | Rubber | | Class 5 | 18-22 | 1-3 | | |
| DWSGQ11.0-04 | | Rubber+Spring | | | | | | |

2. Diamond Wire Saw for Granite Block Squaring and Slab Cutting



This plastic coating type diamond wire saw is usually for cutting stone block to pieces, shaping and profiling, which can be used to dissect and get the standard block.

| Code No. | Diameter | Fixing Type | Beads No. pcs/M | Granite Hardness | Linear Speed (m/s) | Cutting Speed (mm/min) | Wire Life (m ³ /m) |
|-----------|----------|-------------|-----------------|-----------------------------------|-------------------------|------------------------|-------------------------------|
| DWSGS11.0 | Φ11.0mm | Plastic | 37pcs | Class 1-2 Class 3-4 Class 5 | 26-30 22-26 18-22 | 4-7 2-4 1-3 | 14-20 8-14 4-8 |
| DWSGS10.5 | Φ10.5mm | Plastic | | | | | |
| DWSGS10.0 | Φ10.0mm | Plastic | | | | | |
| DWSGS9.00 | Φ9.0mm | Plastic | | | | | |

3. Diamond Wire Saw for Granite profiling



This plastic coating type diamond wire with hot-press sintered diamond beads, mostly with 7.2mm-9mm diameter which could be used to make granite figure sawing, edge profiling, shaping and stone cutting as well.

| Code No. | Diameter | Fixing Type | Beads No. pcs/M | Granite Hardness | Linear Speed (m/s) | Cutting Speed (mm/min) | Wire Life (m ² /m) |
|----------|----------|-------------|--------------------|-----------------------------------|-------------------------|---------------------------|----------------------------------|
| DWSGP9.0 | Φ9.0mm | Plastic | 37pcs | Class 1-2 Class 3-4 Class 5 | 26-30 22-26 18-22 | 10-15 5-10 4-7 | 8-12 6-10 4-6 |
| DWSGP8.8 | Φ8.8mm | Plastic | | | | | |
| DWSGP8.5 | Φ8.5mm | Plastic | | | | | |
| DWSGP8.2 | Φ8.2mm | Plastic | | | | | |
| DWSGP7.2 | Φ7.2mm | Plastic | | | | | |

4. Diamond Wire for Marble Quarry Cutting



This spring fixing type diamond wire with hot press sintered diamond beads used for marble(limestone, or very soft stone without quartz) quarry cutting without water(or less water).

| Code No. | Diameter | Fixing Type | Beads No. pcs/M | Marble Hardness | Linear Speed (m/s) | Cutting Speed (mm/min) | Wire Life(m ² /m) |
|-----------|----------|-------------|-----------------|-----------------|--------------------|------------------------|------------------------------|
| DWSMQ11.5 | Φ11.5mm | Spring | 28-32 | Class 1-2 | 36-38 | 35-40 | 30-55 |
| | | | | Class 3-4 | 34-36 | 33-38 | 15-35 |
| DWSMQ11.0 | Φ11.0mm | Spring | 28-32 | Class 5 | 30-32 | 30-35 | 10-20 |

5. Diamond Wire Saw for Marble Block Squaring and Slab Cutting



China Diamant Tools Co., Limited

| Code No. | Diameter | Fixing Type | Beads No. pcs/M | Granite Hardness | Linear Speed (m/s) | Cutting Speed (mm/min) | Wire Life (m ² /m) |
|-----------|----------|-------------|-----------------|-----------------------------------|-------------------------|-------------------------|-------------------------------|
| DWSMS11.0 | Φ11.0mm | Plastic | 37pcs | Class 1-2 Class 3-4 Class 5 | 36-38 34-36 30-32 | 20-40 15-30 10-20 | 30-70 20-50 15-30 |
| DWSMS10.5 | Φ10.5mm | Plastic | | | | | |
| DWSMS10.0 | Φ10.0mm | Plastic | | | | | |
| DWSMS9.0 | Φ9.0mm | Plastic | | | | | |

6. Diamond Wire Saw for Marble Profiling



China Diamant Tools Co., Limited

| Code No. | Diameter | Fixing Type | Beads No. pcs/M | Granite Hardness | Linear Speed (m/s) | Cutting Speed (mm/min) | Wire Life (m ² /m) |
|----------|----------|-------------|--------------------|-----------------------------------|-------------------------|---------------------------|----------------------------------|
| DWSMP9.0 | Φ9.0mm | Plastic | 37pcs | Class 1-2 Class 3-4 Class 5 | 30-40 28-35 25-30 | 20-35 15-25 10-20 | 30-50 25-40 20-30 |
| DWSMP8.8 | Φ8.8mm | Plastic | | | | | |
| DWSMP8.5 | Φ8.5mm | Plastic | | | | | |
| DWSMP8.2 | Φ8.2mm | Plastic | | | | | |
| DWSMP7.2 | Φ7.2mm | Plastic | | | | | |

7. Diamond Multi-Wire for Granite Block Cutting



This plastic coating diamond multi-wire saw with hot-press sintered beads, which is installed in multi-wire machine to cut block into slabs. Compared to traditional marble gang saw, it is also an alternative for granite slab cutting.

| Code No. | Diameter | Fixing Type | Beads No. pcs/M | Linear Speed (m/s) | Cutting Speed (mm/min) | Wire Life (m ² /m) |
|----------|----------|-------------|--------------------|-----------------------|---------------------------|----------------------------------|
| DMWSG8.3 | Φ8.3mm | Plastic | 37pcs | 28-32 | 5-8 | 8-15 |
| DMWSG7.3 | Φ7.3mm | Plastic | | | | |
| DMWSG6.3 | Φ6.3mm | Plastic | | | | |
| DMWSG5.3 | Φ5.3mm | Plastic | | | | |

8. Diamond Multi-Wire for Marble Block Cutting



| Code No. | Diameter | Fixing Type | Beads No. pcs/M | Linear Speed (m/s) | Cutting Speed (mm/min) | Wire Life (m ² /m) |
|----------|----------|-------------|--------------------|-----------------------|---------------------------|----------------------------------|
| DMWSM8.3 | Φ8.3mm | Plastic | 32pcs | 28-32 | 5-8 | 8-15 |
| DMWSM7.3 | Φ7.3mm | Plastic | | | | |
| DMWSM6.3 | Φ6.3mm | Plastic | | | | |
| DMWSM5.3 | Φ5.3mm | Plastic | | | | |

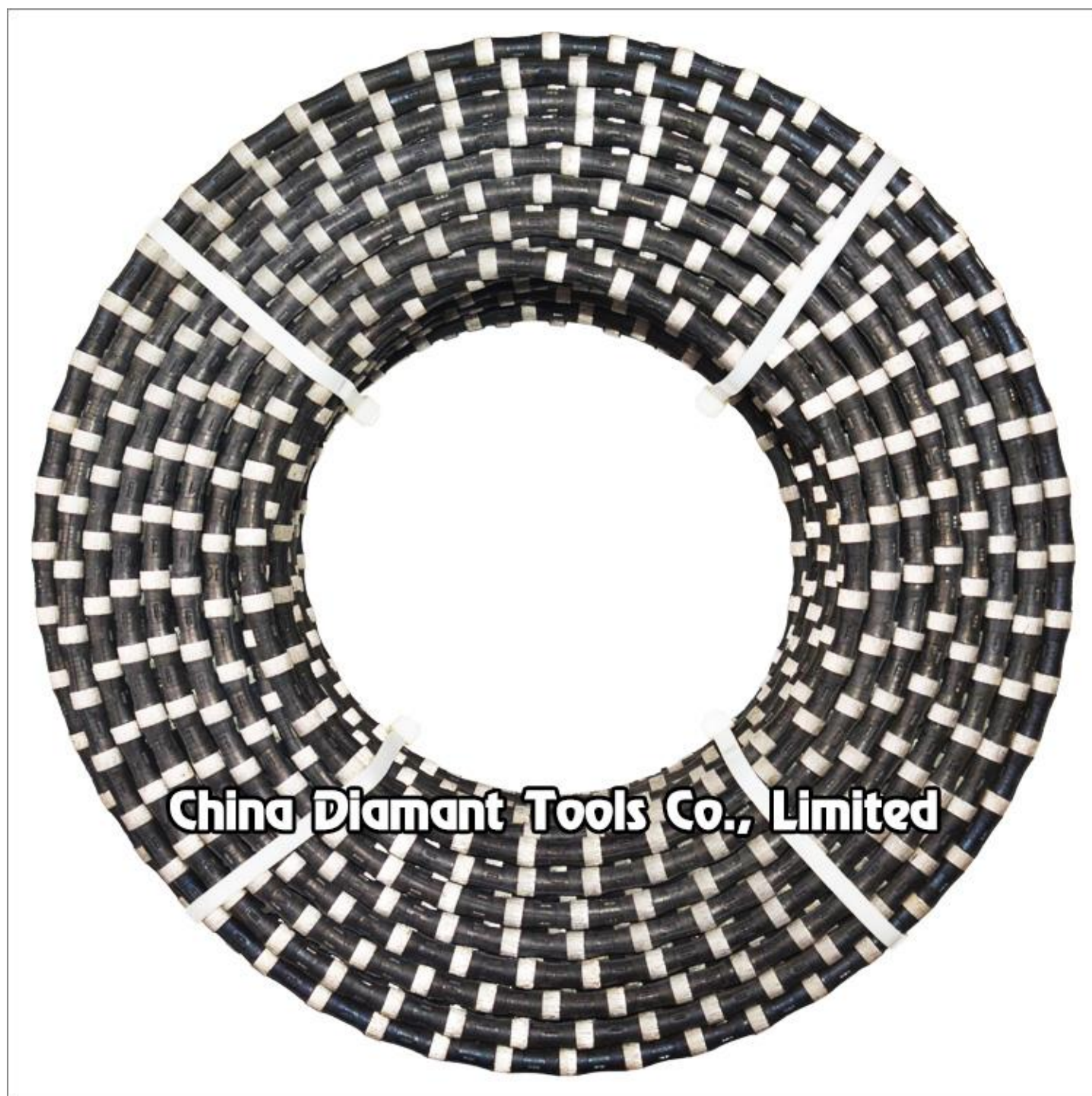
9. Ultra-thin Diamond Wire Saw for Precise Processing



This plastic coating thin type diamond wire with vacuum brazed diamond beads is widely used for cutting of various materials, such as precious stone, granite, marble, glass, crystal, jade, metal, rubber, etc., which reduces the waste cost and increases the yield of previous materials.

| Code No. | Diameter | Fixing Type | Beads No. pcs/M | Materials Cut | Linear Speed (m/s) |
|----------|----------|-------------|---|--|--------------------|
| DWSUT5.0 | Φ5.0mm | Plastic | 43pcs Vacuum Brazed Diamond Beads | stone metal rubber foamed materials | 25-30 |
| DWSUT4.0 | Φ4.0mm | Plastic | | | |
| DWSUT3.4 | Φ3.4mm | Plastic | | | |
| DWSUT2.2 | Φ2.2mm | Plastic | | | |

10. Diamond Wire Saw for Concrete Cutting



This rubber+spring coating diamond wire is widely used in concrete construction cutting, bridge and under-water construction cutting.

| Code No. | Diameter | Fixing Type | Beads No. pcs/M | Material Cutting | Linear Speed (m/s) | Cutting Speed (mm/min) | Wire Life(m ² /m) |
|----------|----------|---------------|-----------------|------------------|--------------------|------------------------|------------------------------|
| DWSC11.5 | Φ11.5mm | Rubber+Spring | 40pcs | Various Concrete | 20-22 | 0.8-2.0 | 1.0-2.5 |
| DWSC11.0 | Φ11.0mm | Rubber+Spring | 40pcs | | | | |
| DWSC10.5 | Φ10.5mm | Rubber+Spring | 40pcs | | | | |

11. Diamond Wire Saw for Steel / Metal Construction Cutting

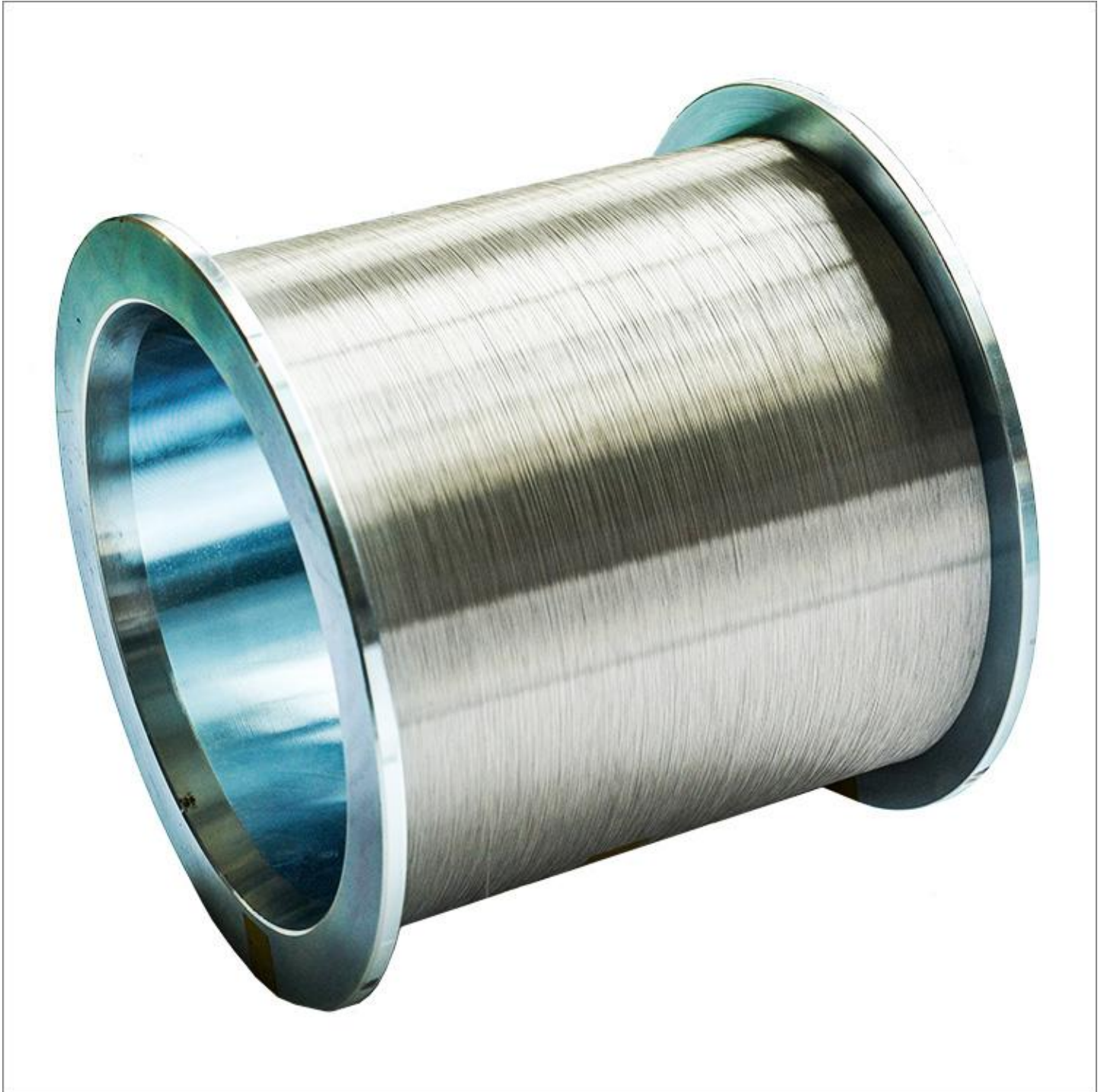


"Rubber + spring" coating type diamond wire saw with electroplated diamond beads, this technique is widely used in steel and metal construction cutting, also applicable for offshore or under-water conditions.



| Code No. | Diameter | Coating Type | Beads Type | Beads No. | Material Cutting |
|----------|----------|-----------------|-----------------------|-----------|----------------------------|
| DWSM10.5 | Φ10.5mm | Rubber + Spring | Diamond Electroplated | 46pcs/M | Steel / Metal Construction |

12. Ultra-thin Electroplated Diamond Wire Saw



The wires are used in manual, in-line, multi-wire cutting machines, it can replace the cutting process of light abrasive, they are perfect for precise cutting various types of artificial crystal, ceramic, quartz glass, monocrystalline silicon, polycrystalline silicon, sapphire and special metal materials and so on. Also applies to laboratory or research institutes to conduct research.



| Code No. | Diamond Size(um) | Min Circle Diameter(mm) | Min Breaking Load(N) | Application |
|-----------------|-------------------------|--------------------------------|-----------------------------|-------------------------------|
| DWSUTE55 | 5-10 | 100 | 10 | Silicon Slicing |
| DWSUTE60 | 6-12 | 100 | 13.5 | Silicon Slicing |
| DWSUTE65 | 6-12/7-14 | 100 | 15.2 | Silicon Slicing |
| DWSUTE70 | 7-14 | 100 | 17.2 | Silicon Slicing |
| DWSUTE80 | 6-12/8-12 | 100 | 20.5 | Silicon Slicing |
| DWSUTE145 | 8-12/8-16 | 130 | 40 | Magnetic Material Cutting |
| DWSUTE180 | 30-40 | 130 | 49 | Magnetic Material Cutting |
| DWSUTE195 | 30-40 | 130 | 50 | Magnetic Material Cutting |
| DWSUTE210 | 23-35/30-40 | 130 | 60 | Magnetic Material Cutting |
| DWSUTE230 | 30-40 | 130 | 70 | Sapphire Cutting |
| DWSUTE240 | 30-40 | 130 | 78 | Sapphire Cutting |
| DWSUTE250 | 30-40 | 150 | 80 | Sapphire Cutting |
| DWSUTE260 | 30-40/35-45 | 150 | 83 | Sapphire Cutting |
| DWSUTE320 | 40-50 | 150 | 150 | Silicon Bricking and Cropping |
| DWSUTE350 | 40-50 | 150 | 200 | Silicon Bricking and Cropping |
| DWSUTE370 | 30-40/40-50 | 200 | 200 | Silicon Bricking and Cropping |
| DWSUTE420 | 40-50 | 200 | 280 | Silicon Bricking/Squaring |
| DWSUTE450 | 40-50 | 200 | 280 | Silicon Bricking/Squaring |